



99-95527001 - ISSUE 1-1

ENGLISH

CONE CRUSHER BUCKET OPERATORS MANUAL



www.augertorque.com

INDEX



FOREWORD	4
Enquiries	4
Operating Limits	4
The Machinery Directive (European Community only)	4
Declaration Of Conformity	4
REGISTRATION	6
INTRODUCTION	9
SAFETY NOTES	10
Protect Yourself	10
You May Need	10
Know Your Equipment	10
Danger, Warning And Caution	10
Protective And Safety Devices	11
Check The Equipment	11
Hazard Classification (Only applicable to ANSI Safety Labels)	11
Safety Precautions	12
Safety Decals	13
IDENTIFICATION	14
Typical Setup	14
MOUNTING - HITCH FITTING	15
Double Pin Hitch	15
Skid Steer Loader & Telehandler	16
HYDRAULIC CONNECTIONS	17
Attach Hydraulic Hoses	17
Minimum Working Pressure	17
Maximum Permissible Back Pressure	17
RUNNING-IN	18
PREPARATION	18
WORKING PROCEDURE	19

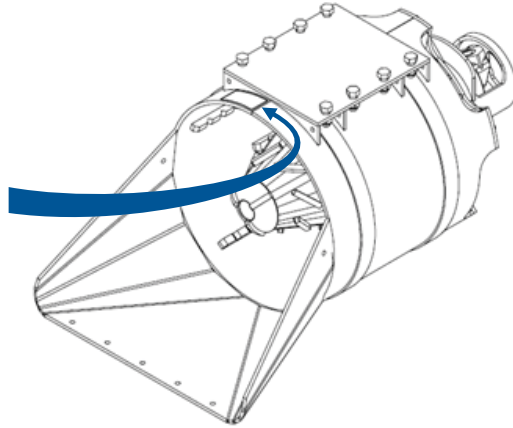
TRANSPORTATION	21
Transportation On Public Highways	21
Transportation Within The Job Site	21
MAINTENANCE & LUBRICATION	21
Service Intervals	22
Cone Removal	23
Drive Unit Removal	23
TROUBLESHOOTING	24
SERVICE RECORD	27
WARRANTY STATEMENT	33

FOREWORD

Enquiries

Please state the model type and serial number when making enquiries or orders and all written correspondence. The serial number is recorded on a plate located on the top of the Cone Crusher Bucket.

99-5057		AUGERTORQUE®	Distributed by:	
Model:	Serial No:	Weight:		
<input type="text"/>	<input type="text"/>	<input type="text"/>	Kg	
Flow Range:	From	To	Lpm	
<input type="text"/>	<input type="text"/>	<input type="text"/>	<input type="text"/>	
Pressure Range:	From	To	Bar	
<input type="text"/>	<input type="text"/>	<input type="text"/>	<input type="text"/>	
Max. Back Pressure:	Bar	Date of Manufacture		
<input type="text"/>	<input type="text"/>	<input type="text"/>		



Operating Limits

This equipment must be operated within the parameters stated on the serial plate. Failure to do so may cause damage to the equipment and invalidate the warranty. If in doubt, contact your nearest Auger Torque dealer.

The Machinery Directive (European Community only)

The Machinery Directive 2006/42/EC (formerly 98/37/EEC) provides the harmonisation of the essential health and safety requirements for machinery, through a combination of mandatory health and safety requirements and voluntary harmonised standards. Such directives apply only to products that are intended to be placed on or put into service in the market for the first time. The manufacturer or the authorised representative must draw up a 'Declaration of Conformity'.

Declaration Of Conformity

Where Cone Crusher Buckets are supplied in conjunction with Auger Torque Europe Ltd manufactured product, Auger Torque Europe Ltd have control over the suitability of the parts supplied. To show this and meet with the lawful requirements of the Machinery Directive a Declaration of Conformity is issued and a CE mark is applied to the assembly.

(copy example follows)



Manufactured by Auger Torque Europe Limited

EU Declaration of Conformity

The responsible person:

Name	
Position	
Company Name	<i>Auger Torque Europe Ltd</i>
Address	<i>Hazelton, Cheltenham, GL54 4DX, England</i>
Telephone	<i>++44 (0) 1451 861652</i>
Fax	<i>++44 (0) 1451 861660</i>

Declares that the product described:

Manufacturer	<i>Auger Torque Europe Ltd.</i>
Model	
Serial Number	

Conforms to the Machinery Directive 2006/42/EC.

It also complies with the essential health and safety requirements, national standards and the transposed harmonised standards appropriate for this product.

Signed by:
(The responsible person)

Dated

REGISTRATION

Complete this form and keep it with the manual



Auger Torque Europe Ltd
Hazleton
Cheltenham
GL54 4DX
England
Tel.: +44 (0) 1451 861652
Fax.: +44 (0) 1451 861660
Email : sales@augertorque.com

Auger Torque Australia Pty Ltd
481 Boundary Rd
Dara
Queensland 4076
Australia
Tel.: +61 (0) 7 3274 2077
Fax.: +61 (0) 7 3274 5077
Email : sales@augertorque.com.au

Auger Torque USA LLC
2640 Jason Industrial Parkway
Winston, GA 30187
USA
Tel.: (+1) 844 287 6300
Fax.: (+1) 770 947 9916
Email : sales@augertorqueusa.com

MODEL NUMBER:

SERIAL NUMBER:

DATE OF MANUFACTURE:

SUPPLIER / DEALER:

DATE SOLD TO SUPPLIER / DEALER:

DATE SOLD TO ORIGINAL END USER:

OWNER OR OPERATOR:

PARENT MACHINE MAKE & MODEL:

Note; Always quote the serial number in any communication with your supplier / dealer

REGISTRATION

For warranty purposes this form **MUST** be completed and returned to Auger Torque within 14 days of purchase by the end user.



Auger Torque Europe Ltd
Hazleton
Cheltenham
GL54 4DX
England
Tel.: +44 (0) 1451 861652
Fax.: +44 (0) 1451 861660
Email : sales@augertorque.com

Auger Torque Australia Pty Ltd
481 Boundary Rd
Dara
Queensland 4076
Australia
Tel.: +61 (0) 7 3274 2077
Fax.: +61 (0) 7 3274 5077
Email : sales@augertorque.com.au

Auger Torque USA LLC
2640 Jason Industrial Parkway
Winston, GA 30187
USA
Tel.: (+1) 844 287 6300
Fax.: (+1) 770 947 9916
Email : sales@augertorqueusa.com

MODEL NUMBER:

SERIAL NUMBER:

DATE OF MANUFACTURE:

SUPPLIER / DEALER:

DATE SOLD TO SUPPLIER / DEALER:

DATE SOLD TO ORIGINAL END USER:

OWNER OR OPERATOR:

PARENT MACHINE MAKE & MODEL:

Note; Always quote the serial number in any communication with your supplier / dealer

For warranty purposes the form on the reverse of this page should be completed and returned to the appropriate address.

Auger Torque Europe Ltd
Hazleton
Cheltenham
GL54 4DX
England
Tel.: +44 (0) 1451 861652
Fax.: +44 (0) 1451 861660
Email : sales@augertorque.com

Auger Torque Australia Pty Ltd
481 Boundary Rd
Dara
Queensland 4076
Australia
Tel.: +61 (0) 7 3274 2077
Fax.: +61 (0) 7 3274 5077
Email : sales@augertorque.com.au

Auger Torque USA LLC
2640 Jason Industrial Parkway
Winston, GA 30187
USA
Tel.: (+1) 844 287 6300
Fax.: (+1) 770 947 9916
Email : sales@augertorqueusa.com

INTRODUCTION

Auger Torque thank you for purchasing your new product. This operating manual has been prepared to enable you to operate the equipment in a safe manner.

Auger Torque Cone Crusher Units have been designed for use with specific Auger Torque mounting frames and wear parts. Provided these are used and maintained correctly, they will provide a safe and reliable method of repurposing material.

For information on lubrication and maintenance intervals, see page 21.

Before operating, please note:

Your Cone Crusher comes complete, filled with the correct amount of oil. There is no need to check the oil level.

Hydraulic hoses must be fitted and tightened to the correct torque (see page 17).

The unit must be run in following the recommended procedure (see page 18).

NOTE:

This operating manual should be used in conjunction with the parent machine's operating instructions.

Instruction books should be regarded as part of the machine. They should always be kept safe with the machine for easy and quick reference.

New or extra copies can be obtained from your Auger Torque dealer or direct from Auger Torque.

Auger Torque continually strives to improve and increase its range of products and therefore reserves the right to alter its specifications at any time without notice or obligation. The company accepts no responsibility for discrepancies which may occur between specifications of its machines and descriptions thereof contained in its publications.

SAFETY NOTES

Protect Yourself

Make sure you wear protective clothing and personal safety items.

You May Need

- A Hard Hat
- Safety Goggles
- Hearing Protection
- Foul Weather Clothing
- Reflective Clothing
- Protective Gloves
- Safety Boots

DO NOT wear items of loose clothing, jewellery or other items and tie up any long hair which could entangle in the controls or other parts of the machine.

Know Your Equipment

Get to know all you how to operate all controls on the machine and the attachments.

IF THERE IS SOMETHING IN THE MANUAL WHICH YOU DO NOT UNDERSTAND, CONTACT THE MACHINE AGENT OR MANUFACTURER AND ASK THEM TO EXPLAIN IT TO YOU.

Danger, Warning And Caution

This symbol below has 3 important meanings when used with the following captions.



DANGER: An IMMEDIATELY HAZARDOUS situation that WILL result in DEATH or VERY SERIOUS INJURY



WARNING: A POTENTIALLY HAZARDOUS situation that COULD result in DEATH or VERY SERIOUS INJURY



CAUTION: A POTENTIALLY HAZARDOUS situation that MAY result in MINOR INJURY

Protective And Safety Devices

Keep all protective devices in place and securely fastened. Make sure all guards, shields and safety signs are properly installed and are in good condition.

Check The Equipment

Before you operate the equipment, take time to check your machine and ensure that all systems are in good operational order.

- Never operate the equipment with worn, damaged or missing parts. Use only genuine replacement parts.
- Always ensure that the parent machine is secure and stable with its engine switched off and hydraulic pipes disconnected before carrying out any maintenance work.
- Check for loose, broken, missing or damaged parts. Have everything put into good repair and make sure all safety devices are in place.
- Perform all maintenance procedures outlined for the equipment.
- Always protect hands. Select appropriate gloves when handling the equipment during fitting, removing or adjusting
- Always protect feet with safety boots.



WARNING: Hydraulic fluid under pressure can penetrate the skin or eyes and cause serious PERSONAL INJURY, BLINDNESS OR DEATH. Fluid leaks under pressure may not be visible. Use a piece of wood or thick cardboard to find leaks. DO NOT USE YOUR BARE HANDS. Wear safety goggles for eye protection. If any fluid is injected into the skin, it MUST be surgically removed. SEE A DOCTOR IMMEDIATELY

Make sure all hydraulic lines are correctly installed.

Before applying pressure to the hydraulic system be sure all connections are tight and that lines, pipes and hoses are not damaged. Before disconnecting hydraulic lines, be sure to relieve all pressure.

Hazard Classification (Only applicable to ANSI Safety Labels)



DANGER: IMMEDIATE HAZARD! - Failure to understand or obey this information is likely to result in personal injury or death.



WARNING: Failure to follow these instructions may result in personal injury or death.



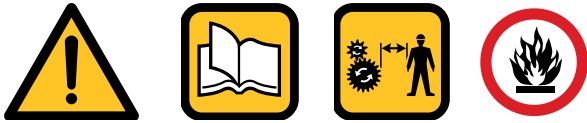
CAUTION: Failure to follow these instructions may result in minor personal injury or damage to the machine or the vehicle.



NOTICE: This is important information for the proper use of this equipment. Failure to comply may lead to premature equipment failure.

CLEAN OR REPLACE THE SAFETY LABELS IF THEY CANNOT BE CLEARLY READ OR UNDERSTOOD.

Safety Precautions



NEVER operate or assemble the equipment without **fully** understanding the operating instructions of both the equipment unit and the parent machine.

Auger Torque recommend you receive dealer instruction before operating the unit.

NEVER operate the equipment unless you are in good physical condition and mental health.

NEVER operate the equipment under the influence of any substance (including drugs & alcohol) which might impair vision.

NEVER operate the equipment with worn, damaged or missing parts. Use only genuine replacement parts.

NEVER proceed with works before completing a site risks assessment immediately before commencing work. Nominating the safe work exclusion zone radius for persons and animals as part of identifying risks and implementing controls.

NEVER allow minors to operate the equipment.



ALWAYS survey the work area before commencing operations. Check for potential hazards, eg. Electricity or communication cables etc.

ALWAYS ensure that the parent machine is secure and stable with it's engine switched off before carrying out any maintenance work.

ALWAYS ensure the hydraulic oil supply to the attachment is disconnected by uncoupling the hydraulic hose connectors before fitting, removing or adjusting the equipment

ALWAYS wear head protection and eye protection when working on the unit.

ALWAYS protect hands. Select appropriate when handling the equipment during fitting, removing or adjusting the unit.

ALWAYS protect feet. Wear approved safety boots.

ALWAYS follow the parent machine instructions regarding noise protection.

STAY ALERT. Should something break, come loose or fail to operate on your equipment, STOP WORK, lower equipment to the ground, shut off the engine and lock out hydraulic supply, inspect the machine and have repairs or adjustments made before resuming operation.

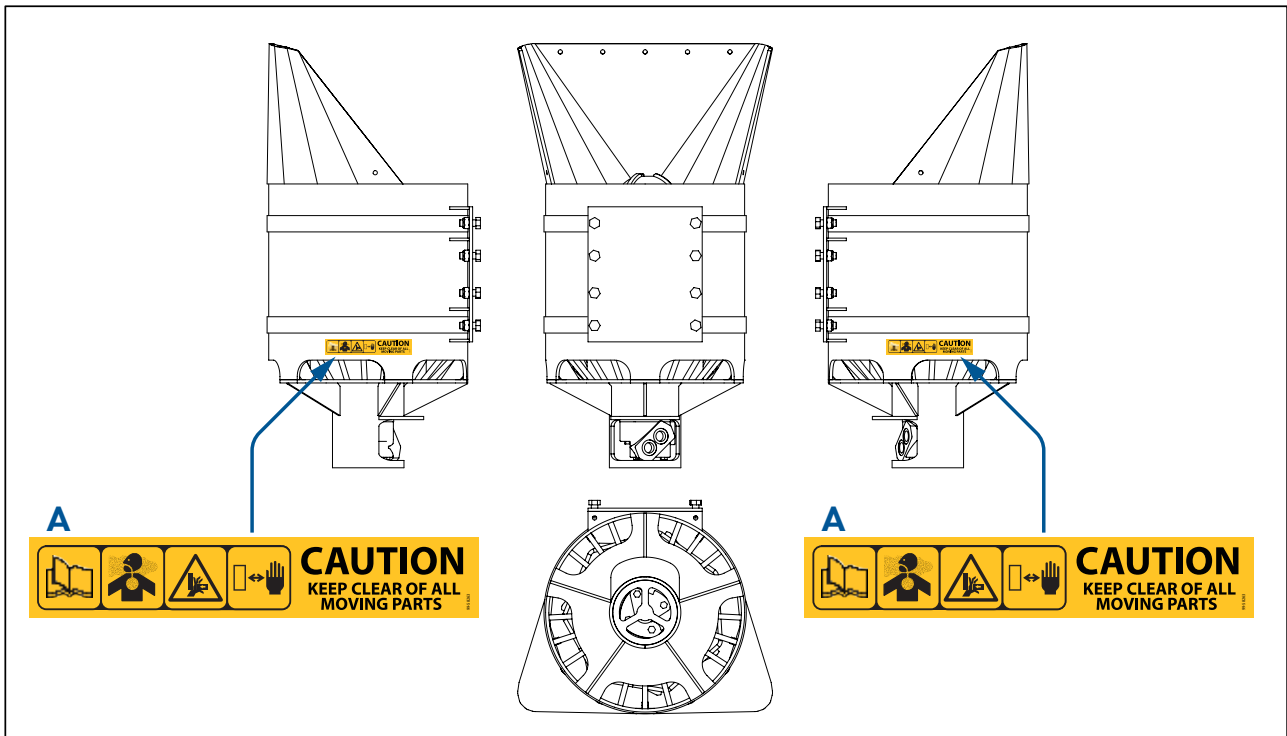
Safety Decals

ALL safety signs listed must be fitted to the machine and must be legible.

Use mild soap and water to clean safety signs - DO NOT use solvent-based cleaners because they may damage safety sign material.

Safety signs are fitted to the machine to warn of possible hazards and MUST be replaced immediately if they become unreadable or lost.

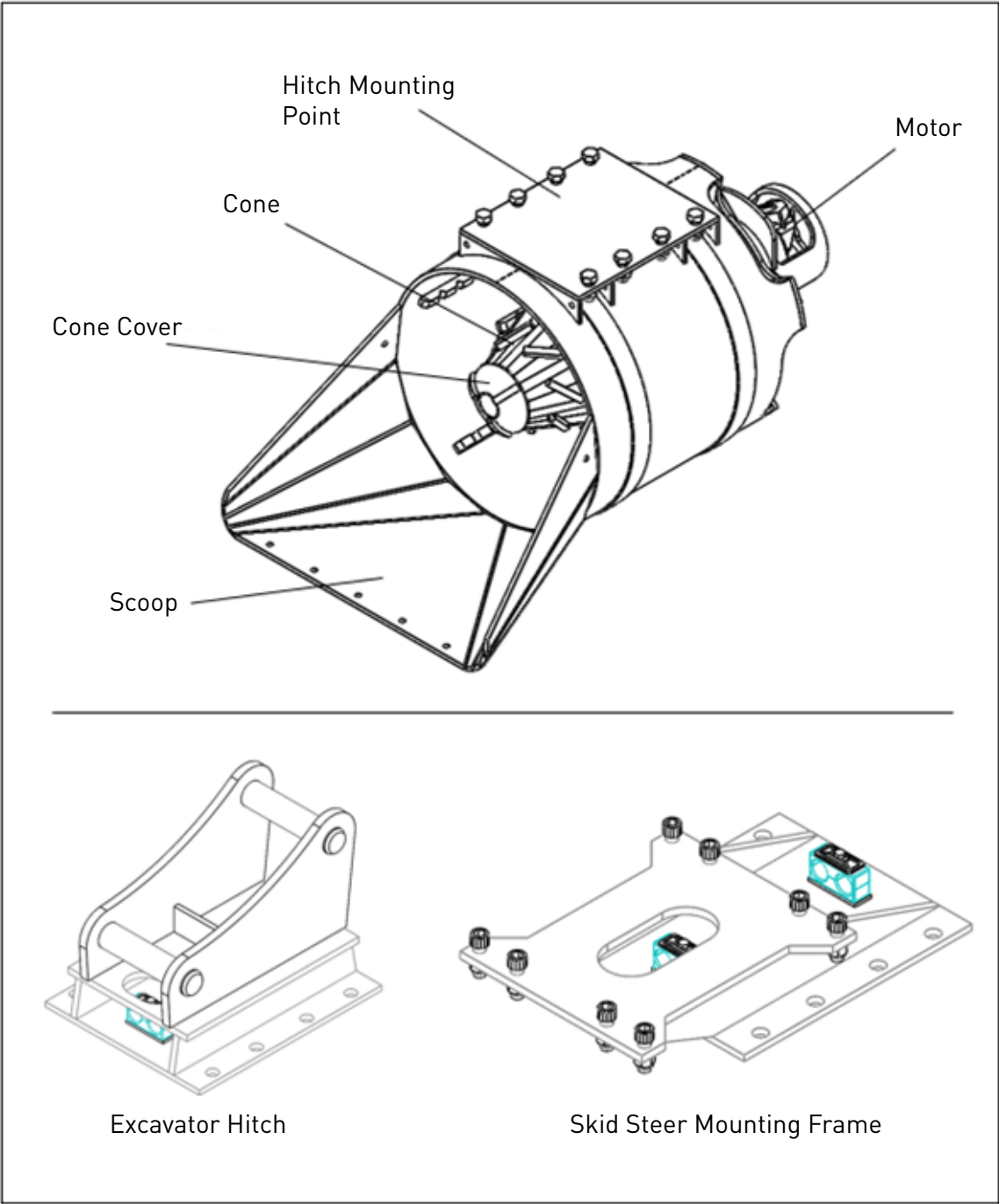
If the machine is repaired and parts have been replaced on which safety signs were fixed, ensure new safety signs are fitted before the machine is put into service.



Item	Description	Quantity	Part Number
A	CAUTION LABEL	2	99-58263

IDENTIFICATION

Typical Setup



MOUNTING - HITCH FITTING

SAFETY FIRST



ALWAYS work in pairs (2 skilled operatives) whenever the product components are being assembled or disassembled from the parent machine. Always check the weight of the attachment and ensure you have the correct equipment for handling it.



ALWAYS check parent machine:

- Is in correct working order
- Is parked correctly on flat ground
- Has its hand brake **ON**, its hydraulic circuit locked out and its engine switched **OFF**.

Check that the mounting frame is of the correct model and type to fit the parent machine. Ensure mounting frame and attachment points are clean before fitting. Use suitably rated lifting equipment if required (see data plate for weight).



NOTE: If a quick Hitch is fitted to the parent machine, refer to the quick Hitch manufacturer's installation instructions for correct fitting procedure.

FITTING: Ensure all components are greased on assembly:

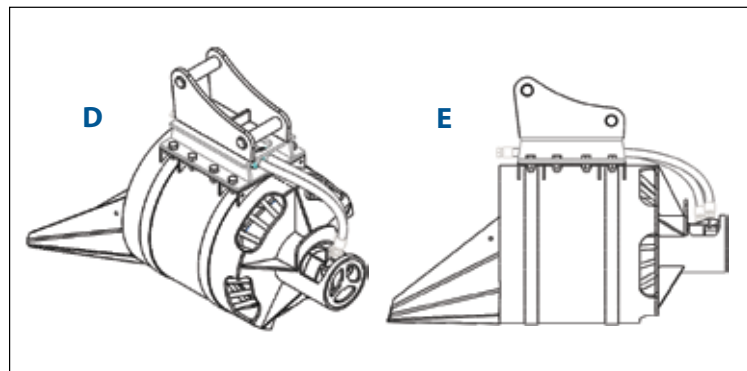
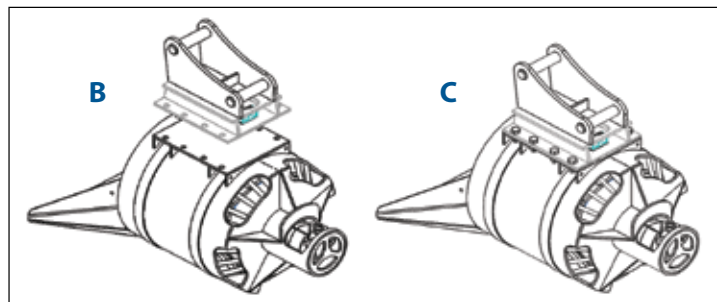
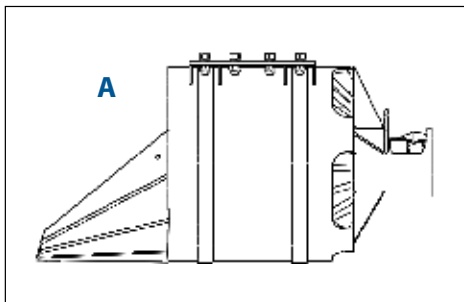
Double Pin Hitch

Set the Cone Crusher Bucker horizontally, with the scoop led flat on the floor (fig A).

Using appropriate lifting equipment position the Cone Crusher excavator hitch so the 8 through holes align with the hitch plate holes on the cone crusher. If the hitch is angled have the highest pin closest to the crusher opening (Fig b).

Position the double pin hitch on top of the mounting plate and secure with 8 x M20 bolts, Nord washers and Nyloc nuts (Fig c).

Install hoses, from motor ports passing through the two hose clamps in the hitch (Fig d & e).



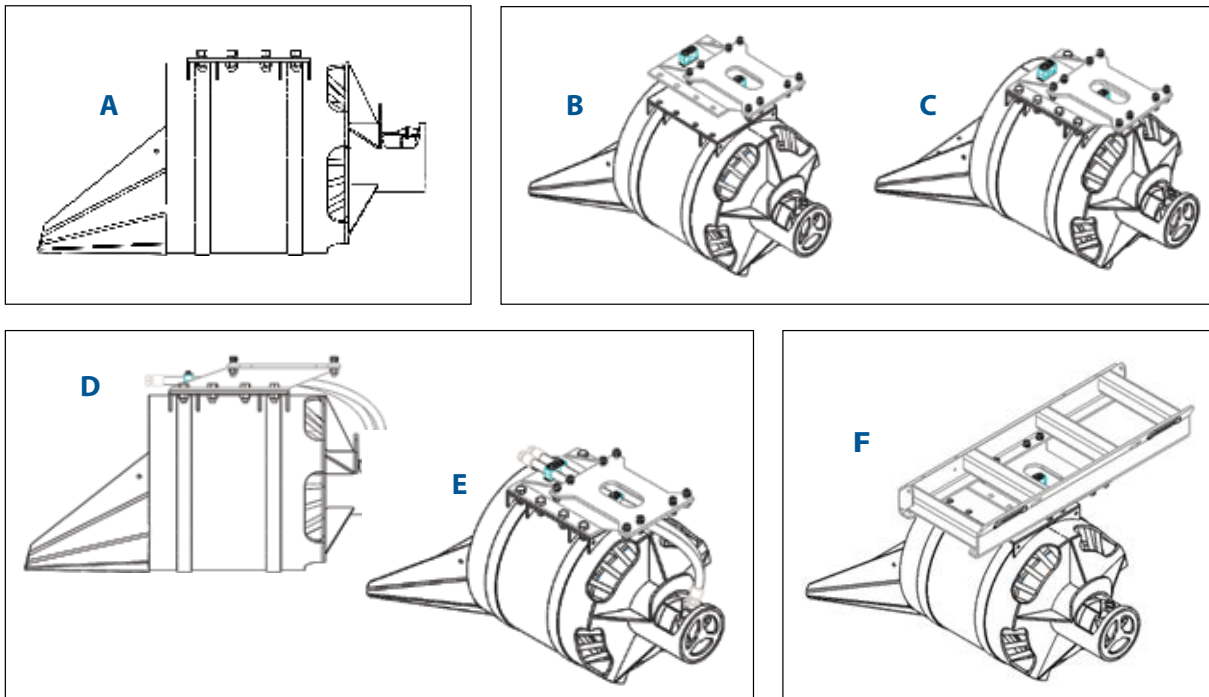
Skid Steer Loader & Telehandler

Set the Cone Crusher unit horizontally, with the scoop led flat on the floor (Fig a).

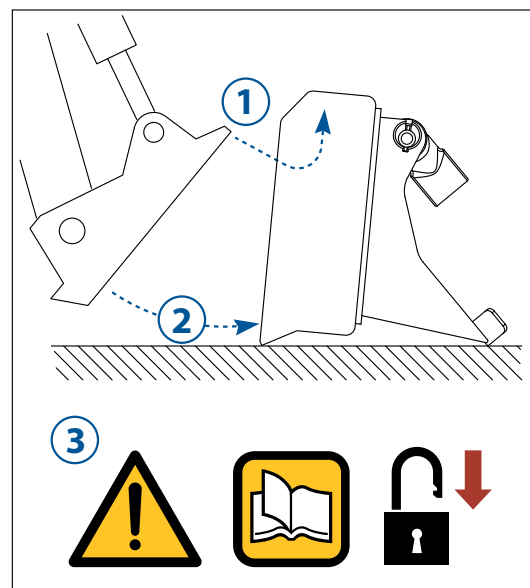
Using appropriate lifting equipment position the Cone Crusher mounting frame so the 8 through holes align with the hitch plate holes on the cone crusher (Fig b).

Position the skid steer hitch on top of the mounting plate and secure with 8 x M20 bolts, Nord washers and Nyloc nuts (Fig c).

Install hoses, from motor ports passing through the two hose clamps in the hitch (Fig d & e). Place the mounting frame suited to your parent machine on the cone crusher skid steer frame and attach as per manufacturers guide (Fig f).



- 1 Slot the top of the parent machine frame under the top edge of the Mounting Frame or Locating Hooks (refer to parent machine operator's manual).
- 2 Swing the parent machine frame to the vertical position.
- 3 Following the parent machine operator's manual, ensure that the Mounting Frame is securely locked in place.



HYDRAULIC CONNECTIONS

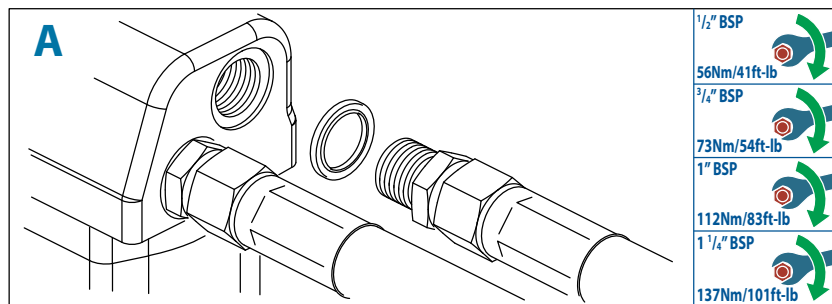


WARNING:

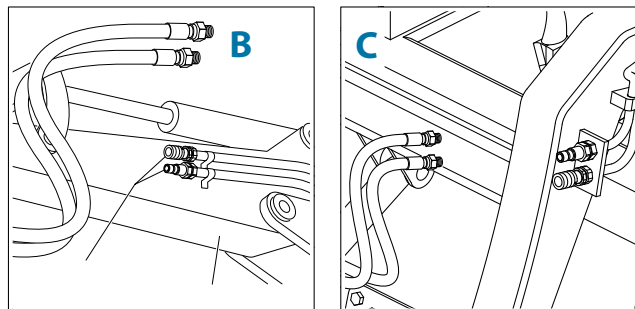
Hydraulic fluid under pressure can penetrate the skin or eyes and cause serious personal injury, blindness or death. Fluid leaks under pressure may not be visible. Use a piece of card or wood to find leaks. **DO NOT** use your bare hands. Wear safety goggles to protect your eyes. If any fluid is injected into the skin, it **MUST** be surgically removed. Seek immediate medical attention.

All Auger Torque Cone Crusher Units require a 'flow' and 'return' of hydraulic oil from the parent machine's auxiliary hydraulic power supply to operate. The oil should be clean and free of contaminants such as water, dust and particulates. Auger Torque products require oil fluid cleanliness to meet or exceed: ISO Code 20/18/13 (ISO4406) to satisfy warranty requirements. All gearboxes are reversible, but require the host machine to be fitted with a two-way flow auxiliary circuit. (Check with parent machine dealer for advice).

When fitting hydraulic hoses, ensure that they are tightened to the correct torque for the hose fittings (Fig A).



Quick Release Couplers are required for connection to the parent machine, but may not be supplied with the unit. These can be sourced locally and should be compatible with the auxiliary hydraulic Quick Release Couplers on the parent machine (Figs B & C). The parent machine auxiliary hydraulic connections are normally located near the end of the loader arms or excavator dipper.



It is critical that the supply of oil is within the stated flow & pressure limits for the Cone Crusher bucket. Refer to the serial plate (see page 3).

Maximum permissible back pressure: 38 BAR (551 psi)

**Hose specifications: Minimum internal hose diameter 3/4" / 19.0mm
Minimum working pressure 240BAR / 3480 psi**

RUNNING-IN

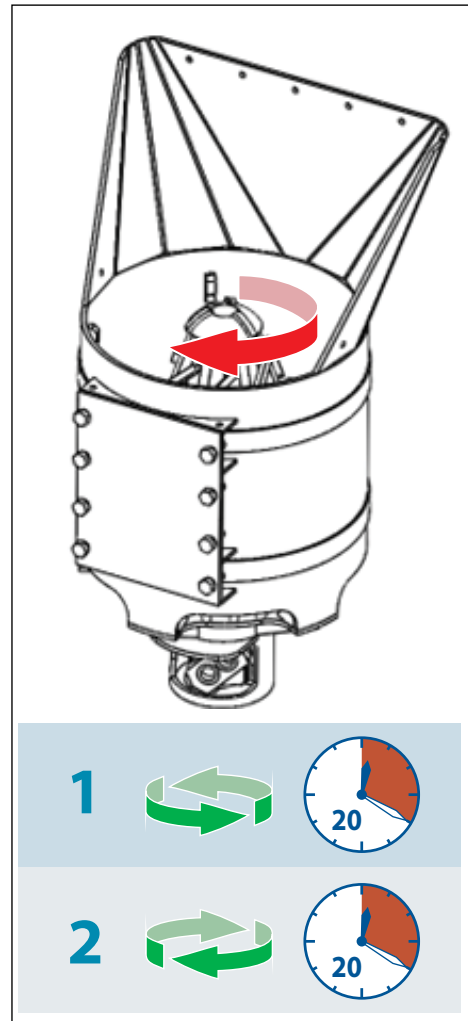
To maximise the life of the unit, it must be run in for a period.

To carry out the running in procedure, suspend the Earth Drill in it's vertical, working position.

For the duration of the running in procedure, ensure there are no bystanders within the nominated radius as defined in the risk assessment completed prior to commencing any works.

Operate the motor at 30% of rated pressure for 20 minutes in each direction before application of full operating load.

To further ensure best motor life and maintain warranty, refer to page 21 for lubrication instructions.



PREPARATION



CONSIDER the topography (e.g. risk of subsidence, slope angle, position to embankments and any previous excavation).



ALWAYS carry out a site survey and risk assessment **BEFORE** starting work

AVOID underground hazards, such as water / gas / electricity / communication lines etc.



If in doubt detection equipment and professional advice should always be considered before carrying out any work.

WORKING PROCEDURE

Before commencing work, ensure that:



The correct hoses are fitted and tightened correctly (See page 17).

The unit has been properly run in (See page 18).



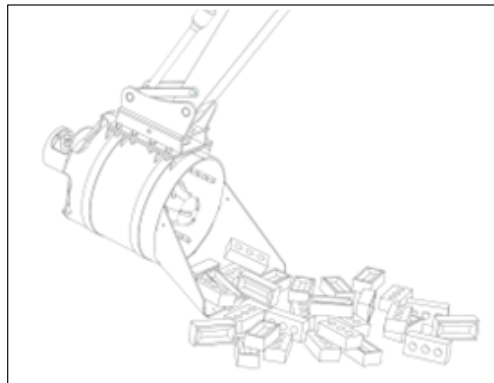
There are no bystanders within the nominated radius as defined in the risk assessment completed prior to commencing any works.

Excavator Operation

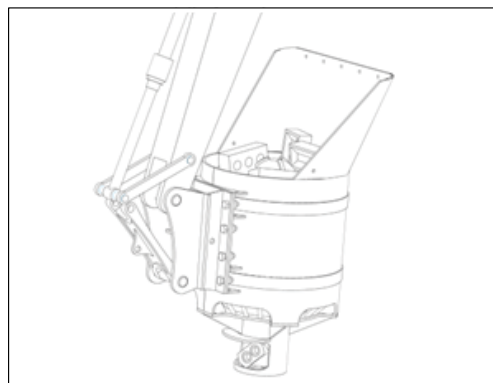
Move the Cone Crusher using the excavator boom so the Cone can be seen from the cab and ensure the cone is able to rotate both clockwise and anti-clockwise.

Position the excavator close to the pile of material to be repurposed.

Reach the excavator arm out past the pile of material to allow the scooping motion to occur as the cone crusher gets closer to the excavator.



Scoop the material into the Cone Crusher drum by moving the parent machine boom in an arc until the Cone Crusher is near to vertical.



Move the excavator boom to the area designated for the repurposed material. Rotate the cone using the auxiliary hydraulic circuit on the parent machine to crush the material. If material becomes stuck in the drum, rotate in the reverse direction until the blockage has been cleared.

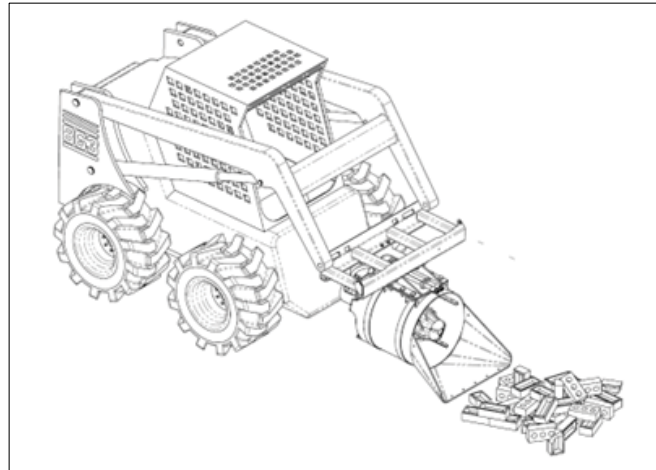
CHECK Parent machines safe working loads before operation.

Skid Steer Operation

Move the Cone Crusher using the Skid Steer arm so the Cone can be seen from the cab and ensure the cone is able to rotate both clockwise and anti-clockwise.

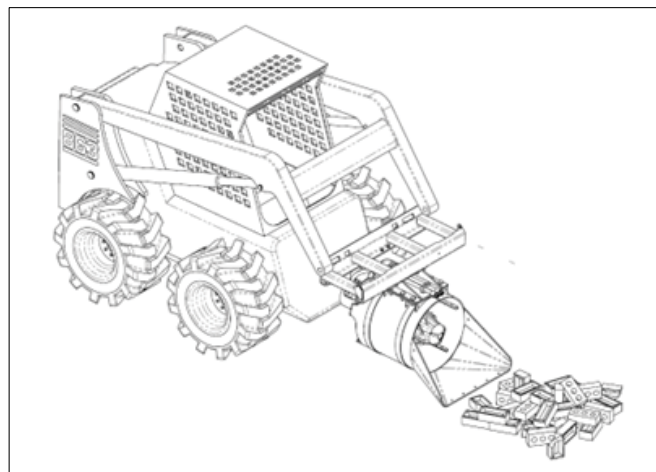
Position the Skid Steer close to the pile of material to be repurposed.

Position the crusher so the scoop section is parallel with the ground. Drive the Skid Steer towards the pile of material to be repurposed.



As the scoop engages with the material move the Skid Steer arm in an arc to scoop material until the cone crusher is in a vertical orientation.

Move the Skid Steer to the area designated for the repurposed material.



Rotate the cone using the auxiliary hydraulic circuit on the parent machine to crush the material. If material becomes stuck in the drum, rotate in the reverse direction until the blockage has been cleared.

TRANSPORTATION

Transportation On Public Highways

ALWAYS remove the Cone Crusher before driving or transporting the parent machine on public highways.

ALWAYS store the Cone Crusher securely and safely when removed from the parent machine, taking special care of the hydraulic hoses and connections.

Transportation Within The Job Site

ALWAYS operate the parent machine slowly when on site taking great care to avoid surroundings.

RECOMMENDED: Keep the Cone Crusher low to the ground to avoid obstructed vision and reduced lifting lever arm.

MAINTENANCE & LUBRICATION

SAFETY



Safety at all times



Ensure environmentally safe disposal of waste oil:

Do not pour down drain!



Avoid Fire or Explosion:

Do not smoke near, or expose lubricants to, any possible sources of ignition (e.g. fire, electrical sparks or heat sources.)



All lubricants are toxic and potentially carcinogenic (cancer causing).



Avoid contact with skin and eyes:

Wear suitable protective clothing and gloves.



Always use a suitable barrier cream in case of skin contact.



Always wear eye protection:

In the event of skin contact wash with soap and water.

In the event of eye contact wash with water and seek medical advice.



Do not ingest:

If swallowed seek medical advice immediately.

Service Intervals

Your Auger Torque Cone Crusher Bucket features a sealed gear housing filled with gear oil to lubricate the planetary gearset components and bearings within the housing.

Auger Torque Cone Crusher Buckets are low maintenance, however regular checks for oil leaks and following the service schedules are recommended to ensure a trouble free product.

Daily:

Ensure the Cone Crusher drum is free from debris before starting operation.

Weekly:

Grease hitch pins.

Oil Lubrication

Your Cone Crusher Bucket has been prefilled with Gear Oil. This oil requires regular changing. Changing the oil at regular intervals will prolong the life of the unit.

IMPORTANT

To maintain product warranty, your Auger Torque Dealer **MUST** record proof of each oil change.

Please have your Cone Crusher Bucket serviced as specified below by an Authorised Auger Torque service representative.

First oil change after initial use: 2 months or 120 hours*.

Subsequent oil change frequency: 12 months or 800 hours*.

***whichever time period occurs first.**

For the oil change procedure, please refer to the Auger Torque Earth Drill Operators Manual.

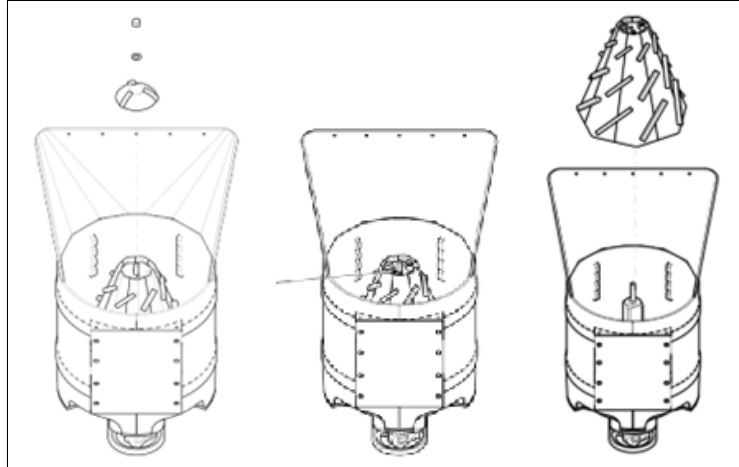
Make sure that each service is documented in the Service Record section of this manual to ensure product warranty is retained and the product life is extended.

Cone Removal

Remove the M20 Nyloc nut and NORD washer located in the centre of the cone cover, to allow the cone cover to be removed.

Place 2 x M12 male lifting eyes in the top of the cone. Secure a 'D' shackle to each lifting eye and a suitable sling/chain that connects the two shackles.

Lift the cone using correctly rated lifting equipment to remove from the main fabrication.



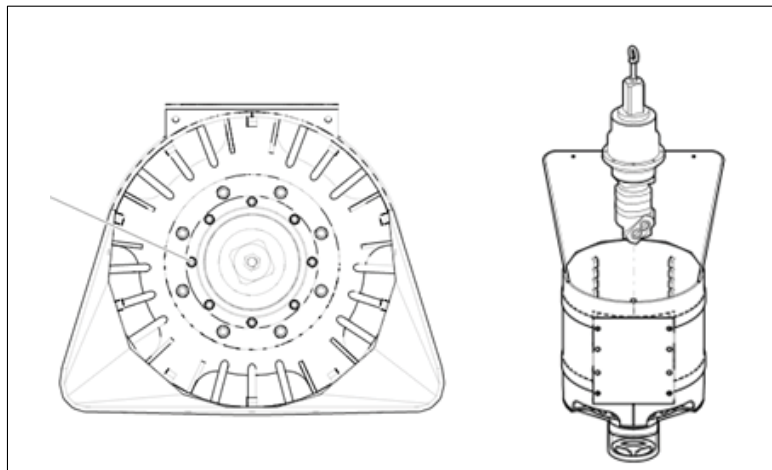
Drive Unit Removal

To remove the Drive Unit from the Cone Crusher, ensure the cone has already been removed.

Remove the 8 x M12 bolts and washers from the Drive Unit hood ring.

Attach an M20 female lifting eye to the threaded bar attached to the Drive Unit shaft.

Lift using appropriate lifting equipment to remove the Drive Unit from the Cone Crusher main body fabrication.



TROUBLESHOOTING

IF IN DOUBT ASK! - Seek Auger Torque / parent machine dealer for advice & repair.

BE SAFE - only use genuine Auger Torque / parent machine spare parts.

MOUNTING FRAME - ASSEMBLY		
FAULT	POSSIBLE CAUSE	ACTION
Mounting frame does not fit parent machine	Incorrect or non-genuine mounting frame being used Damaged / worn parts	Refer to both this manual and parent machine's operating assembly instructions Repair or replace with genuine mounting frame
MOUNTING FRAME - OPERATION		
FAULT	POSSIBLE CAUSE	ACTION
Excessive movement in locating pins	Incorrect or worn locating pins Parent machine pin location / linkage frame pin location worn Damaged parts	Replace with correct new parts Seek advice from parent machine dealer Seek advice from Auger Torque / parent machine dealer. Only use genuine spare parts
CONE CRUSHER BUCKET - ASSEMBLY		
FAULT	POSSIBLE CAUSE	ACTION
Cone Crusher Bucket will not fit mounting frame	Incorrect / incompatible or non genuine mounting frame Damaged parts	Obtain & fit correct and compatible genuine parts Seek advice from Auger Torque dealer. Only use genuine spare parts
Excessive movement in locating pins	Incorrect or worn pins	Replace with correct new genuine parts
CONE CRUSHER BUCKET- OPERATION		
FAULT	POSSIBLE CAUSE	ACTION
Drive unit output shaft does not rotate	No oil flow Parent machine pressure relief valve faulty or set too low	Check that quick release coupler(s) are correctly engaged to parent machine Check that parent machine hydraulic system is operating correctly and has sufficient oil of the correct grade (refer to parent machine operating instructions)

CONE CRUSHER BUCKET - OPERATION

FAULT	POSSIBLE CAUSE	ACTION
Drive unit output shaft does not rotate	Drive unit seized	Test, reset or replace to parent machine's specification
	Insufficient oil flow from parent machine	Seek advice from Auger Torque dealer
Slow crushing speed / slow rotation of cone	Incompatible Cone Crusher Bucket to parent machine combination	Check the parent machine hydraulic system is operating correctly and has sufficient oil of the correct grade
	Worn Cone Crusher Bucket hydraulic motor possibly due to incorrect or dirty oil supply	Check specification. Seek advice from Auger Torque dealer Seek advice from Auger Torque dealer. Only use genuine spare parts. Change parent machine hydraulic oil and filter before fitting replacement drive unit
Cone Crusher Bucket stalls during work	Parent machine pressure relief valve faulty or set too low	Reset/replace pressure release valve to parent machine's specification
	Restricted oil flow	Check for damaged or incorrect hydraulic hoses and connections
	Blocked hydraulic filter	Change parent machine filter and oil
Cone crusher material exits are blocked	Wet material processed through crusher	Clear crusher exits of wet material whilst the cone is stationary and machine is turned off
	Large foreign material blocking exits	Clear crusher exits of material whilst the cone is stationary and machine is turned off
Separation of cone	Locking bolt failure	Seek advice from Auger Torque dealer
	Shaft failure	
Slow crushing speed / slow rotation of Cone	Earth Drill unit seized	Check that parent machine hydraulic system is operating correctly and has sufficient oil of the correct grade

CONE CRUSHER BUCKET - OPERATION		
FAULT	POSSIBLE CAUSE	ACTION
Slow crushing speed / slow rotation of Cone	Insufficient oil flow from parent machine	Check specification. Seek advice from Auger Torque dealer
	Incompatible Cone Crusher to parent machine combination	Check specification. Seek advice from Auger Torque dealer
Cone stalls during work	Worn Cone Crusher hydraulic motor possibly due to incorrect or dirty oil supply	Seek advice from Auger Torque dealer. Only use genuine spare parts. Change parent machine hydraulic oil and filter before fitting replacement drive unit
	Material to be processed is too hard or has become stuck in the cone outer body	Manipulate the parent machine to dislodge unprocessed material or clear by hand when parent machine is switch off.
	Parent machine pressure relief valve faulty or set too low	Reset/replace pressure release valve to parent machine's specification
	Restricted oil flow	Check for damaged or incorrect hydraulic hoses and connections
	Blocked hydraulic filter	Change parent machine filter and oil
OIL - LEAKS		
FAULT	POSSIBLE CAUSE	ACTION
Leaking hydraulic oil	Motor seal failure due to over pressurisation of motor	Check specification. Seek advice from Auger Torque dealer
	Hoses damaged	Inspect and replace worn hoses
	Hoses loose	Tighten hoses to specified torques as shown in operators manual
Leaking Earth Drill oil	Shaft seal failure due to contaminants	Ensure correct assembly of components. Seek advice from Auger Torque dealer
	Shaft failure due to over pressure	Check specification. Seek advice from Auger Torque dealer

SERVICE RECORD

Ensure that each Cone Crusher Bucket service is documented in the Service Records below to ensure product warranty is retained and the product life is extended.

Serial Number	
Make & Model of Parent Machine	
Date of Purchase	

Work carried out - please tick boxes	Date <input type="text"/> Hours <input type="text"/>
Visual Inspection <input type="checkbox"/> Oil Change <input type="checkbox"/> Lubricant Used <input type="text"/> Motor Test <input type="checkbox"/> Motor Bolts Torqued <input type="checkbox"/> Hood Bolts Torqued <input type="checkbox"/> Next Service Date\Hours <input type="text"/>	Comments\remarks <div style="text-align: center; opacity: 0.5; font-size: 48px; font-weight: bold;">STAMP</div>

Work carried out - please tick boxes	Date <input type="text"/> Hours <input type="text"/>
Visual Inspection <input type="checkbox"/> Oil Change <input type="checkbox"/> Lubricant Used <input type="text"/> Motor Test <input type="checkbox"/> Motor Bolts Torqued <input type="checkbox"/> Hood Bolts Torqued <input type="checkbox"/> Next Service Date\Hours <input type="text"/>	Comments\remarks <div style="text-align: center; opacity: 0.5; font-size: 48px; font-weight: bold;">STAMP</div>

Work carried out - please tick boxes	Date <input type="text"/> Hours <input type="text"/>
Visual Inspection <input type="checkbox"/> Oil Change <input type="checkbox"/> Lubricant Used <input type="text"/> Motor Test <input type="checkbox"/> Motor Bolts Torqued <input type="checkbox"/> Hood Bolts Torqued <input type="checkbox"/> Next Service Date\Hours <input type="text"/>	Comments\remarks <div style="text-align: center; opacity: 0.5; font-size: 48px; font-weight: bold;">STAMP</div>

Work carried out - please tick boxes	Date <input type="text"/> Hours <input type="text"/>
Visual Inspection <input type="checkbox"/> Oil Change <input type="checkbox"/> Lubricant Used <input type="text"/> Motor Test <input type="checkbox"/> Motor Bolts Torqued <input type="checkbox"/> Hood Bolts Torqued <input type="checkbox"/> Next Service Date\Hours <input type="text"/>	Comments\remarks <div style="text-align: center; opacity: 0.5; font-size: 48px; font-weight: bold;">STAMP</div>

Work carried out - please tick boxes	Date <input type="text"/> Hours <input type="text"/>
Visual Inspection <input type="checkbox"/> Oil Change <input type="checkbox"/> Lubricant Used <input type="text"/> Motor Test <input type="checkbox"/> Motor Bolts Torqued <input type="checkbox"/> Hood Bolts Torqued <input type="checkbox"/> Next Service Date\Hours <input type="text"/>	Comments\remarks <div style="text-align: center; opacity: 0.5; font-size: 48px; font-weight: bold;">STAMP</div>

Work carried out - please tick boxes	Date <input type="text"/> Hours <input type="text"/>
Visual Inspection <input type="checkbox"/> Oil Change <input type="checkbox"/> Lubricant Used <input type="text"/> Motor Test <input type="checkbox"/> Motor Bolts Torqued <input type="checkbox"/> Hood Bolts Torqued <input type="checkbox"/> Next Service Date\Hours <input type="text"/>	Comments\remarks <div style="text-align: center; opacity: 0.5; font-size: 48px; font-weight: bold;">STAMP</div>

Work carried out - please tick boxes	Date <input type="text"/> Hours <input type="text"/>
Visual Inspection <input type="checkbox"/> Oil Change <input type="checkbox"/> Lubricant Used <input type="text"/> Motor Test <input type="checkbox"/> Motor Bolts Torqued <input type="checkbox"/> Hood Bolts Torqued <input type="checkbox"/> Next Service Date\Hours <input type="text"/>	Comments\remarks <div style="text-align: center; opacity: 0.5; font-size: 48px; font-weight: bold;">STAMP</div>

Work carried out - please tick boxes	Date <input type="text"/> Hours <input type="text"/>
Visual Inspection <input type="checkbox"/> Oil Change <input type="checkbox"/> Lubricant Used <input type="text"/> Motor Test <input type="checkbox"/> Motor Bolts Torqued <input type="checkbox"/> Hood Bolts Torqued <input type="checkbox"/> Next Service Date\Hours <input type="text"/>	Comments\remarks <div style="text-align: center; opacity: 0.5; font-size: 48px; font-weight: bold;">STAMP</div>

Work carried out - please tick boxes	Date <input type="text"/> Hours <input type="text"/>
Visual Inspection <input type="checkbox"/> Oil Change <input type="checkbox"/> Lubricant Used <input type="text"/> Motor Test <input type="checkbox"/> Motor Bolts Torqued <input type="checkbox"/> Hood Bolts Torqued <input type="checkbox"/> Next Service Date\Hours <input type="text"/>	Comments\remarks <div style="text-align: center; opacity: 0.5; font-size: 48px; font-weight: bold;">STAMP</div>

Work carried out - please tick boxes	Date <input type="text"/> Hours <input type="text"/>
Visual Inspection <input type="checkbox"/> Oil Change <input type="checkbox"/> Lubricant Used <input type="text"/> Motor Test <input type="checkbox"/> Motor Bolts Torqued <input type="checkbox"/> Hood Bolts Torqued <input type="checkbox"/> Next Service Date\Hours <input type="text"/>	Comments\remarks <div style="text-align: center; opacity: 0.5; font-size: 48px; font-weight: bold;">STAMP</div>

Work carried out - please tick boxes	Date <input type="text"/> Hours <input type="text"/>
Visual Inspection <input type="checkbox"/> Oil Change <input type="checkbox"/> Lubricant Used <input type="text"/> Motor Test <input type="checkbox"/> Motor Bolts Torqued <input type="checkbox"/> Hood Bolts Torqued <input type="checkbox"/> Next Service Date\Hours <input type="text"/>	Comments\remarks <div style="text-align: center; opacity: 0.5; font-size: 48px; font-weight: bold;">STAMP</div>

Work carried out - please tick boxes	Date <input type="text"/> Hours <input type="text"/>
Visual Inspection <input type="checkbox"/> Oil Change <input type="checkbox"/> Lubricant Used <input type="text"/> Motor Test <input type="checkbox"/> Motor Bolts Torqued <input type="checkbox"/> Hood Bolts Torqued <input type="checkbox"/> Next Service Date\Hours <input type="text"/>	Comments\remarks <div style="text-align: center; opacity: 0.5; font-size: 48px; font-weight: bold;">STAMP</div>

Work carried out - please tick boxes	Date <input type="text"/> Hours <input type="text"/>
Visual Inspection <input type="checkbox"/> Oil Change <input type="checkbox"/> Lubricant Used <input type="text"/> Motor Test <input type="checkbox"/> Motor Bolts Torqued <input type="checkbox"/> Hood Bolts Torqued <input type="checkbox"/> Next Service Date\Hours <input type="text"/>	Comments\remarks <div style="text-align: center; opacity: 0.5; font-size: 48px; font-weight: bold;">STAMP</div>

Work carried out - please tick boxes	Date <input type="text"/> Hours <input type="text"/>
Visual Inspection <input type="checkbox"/> Oil Change <input type="checkbox"/> Lubricant Used <input type="text"/> Motor Test <input type="checkbox"/> Motor Bolts Torqued <input type="checkbox"/> Hood Bolts Torqued <input type="checkbox"/> Next Service Date\Hours <input type="text"/>	Comments\remarks <div style="text-align: center; opacity: 0.5; font-size: 48px; font-weight: bold;">STAMP</div>

Work carried out - please tick boxes	Date <input type="text"/> Hours <input type="text"/>
Visual Inspection <input type="checkbox"/> Oil Change <input type="checkbox"/> Lubricant Used <input type="text"/> Motor Test <input type="checkbox"/> Motor Bolts Torqued <input type="checkbox"/> Hood Bolts Torqued <input type="checkbox"/> Next Service Date\Hours <input type="text"/>	Comments\remarks <div style="text-align: center; opacity: 0.5; font-size: 48px; font-weight: bold;">STAMP</div>

Work carried out - please tick boxes	Date <input type="text"/> Hours <input type="text"/>
Visual Inspection <input type="checkbox"/> Oil Change <input type="checkbox"/> Lubricant Used <input type="text"/> Motor Test <input type="checkbox"/> Motor Bolts Torqued <input type="checkbox"/> Hood Bolts Torqued <input type="checkbox"/> Next Service Date\Hours <input type="text"/>	Comments\remarks <div style="text-align: center; opacity: 0.5; font-size: 48px; font-weight: bold;">STAMP</div>

Work carried out - please tick boxes	Date <input type="text"/> Hours <input type="text"/>
Visual Inspection <input type="checkbox"/> Oil Change <input type="checkbox"/> Lubricant Used <input type="text"/> Motor Test <input type="checkbox"/> Motor Bolts Torqued <input type="checkbox"/> Hood Bolts Torqued <input type="checkbox"/> Next Service Date\Hours <input type="text"/>	Comments\remarks <div style="text-align: center; opacity: 0.5; font-size: 48px; font-weight: bold;">STAMP</div>

WARRANTY STATEMENT

Auger Torque provide a LIFETIME parts replacement warranty on the dislodgement of the Cone Crusher Bucket drive unit shaft.

All Auger Torque products are warranted to be free from defects in materials or workmanship for the periods summarised below:

- Planetary Gearbox Components - 18 Months
- Hydraulic Motors - 18 Months
- All Other Parts / Products - 12 Months

The warranty periods will commence from Date of Sale by an authorised Auger Torque Dealer. Evidence of the date of sale may be required and for Planetary and Hydraulic Motor warranties to be valid the product must be registered with Auger Torque within 4 weeks of the date of sale. Extended Warranty (> 12 months) Products can be registered by completing and returning the registration form within this manual. This warranty is not transferable beyond the initial purchaser of the product.

A warranty claim should be reported to the Auger Torque Dealer who supplied the unit. The Dealer, with the technical backup of Auger Torque, will make an initial assessment.

The customer is responsible for returning the product for warranty inspection to the original supplying dealer's facility. Parts should not be delivered without the prior agreement of the dealer or Auger Torque.

During the warranty period Auger Torque, at its option, will repair or replace any parts free of charge determined as defective by Auger Torque. Such repairs will be undertaken by Auger Torque or its nominated representative at an Auger Torque facility or a location deemed suitable by Auger Torque. Auger Torque are not liable for any associated costs relating to a warranty failure.

Parts repaired or replaced by Auger Torque are then covered by this warranty for the remainder of the original warranty as if such parts were original parts.

Products or parts which, as determined by Auger Torques examination, show wear from normal use, have been improperly operated, damaged by accident or negligence, altered or modified are not considered defective and are not covered by this warranty.

This warranty is void if any attempt is made to make field repairs unless these have been pre-approved in writing by Auger Torque.

This warranty is void if the products are not serviced in-line with the instructions in the Operators Manual. Particular care should be taken to perform regular oil changes in gearboxes.

This warranty is exclusive and in-lieu of any other expressed warranties. There are no warranties of merchantability or fitness for a particular purpose. Auger Torque shall not be liable for any consequential, incidental or punitive damages, losses or expenses, including those resulting from or caused by any defects.

As you would expect from Auger Torque, with our extensive experience and product reliability we'll always go the extra mile to keep you working.

Notes

.....

.....

.....

.....

.....

.....

.....

.....

.....

.....

.....

.....

.....

.....

.....

.....

.....

.....

.....

.....

.....

.....

.....

.....

.....

.....



Notes

.....

.....

.....

.....

.....

.....

.....

.....

.....

.....

.....

.....

.....

.....

.....

.....

.....

.....

.....

.....

.....





YOUR DEALER IS

Auger Torque Europe Ltd

Hazleton
Cheltenham
GL54 4DX
England

Tel: +44 (0) 1451 861652

Fax: +44 (0) 1451 861660

Email: sales@augertorque.com

Auger Torque Australia Pty Ltd

481 Boundary Road
Darra
Queensland 4076
Australia

Tel: +61 (0) 7 3274 2077

Fax: +61 (0) 7 3274 5077

Email: sales@augertorque.com.au

Auger Torque USA LLC

2640 Jason Industrial Parkway
Winston, GA 30187
USA

Tel: (+1) 844 287 6300

Fax: (+1) 770 947 9916

Email: sales@augertorqueusa.com

www.augertorque.com



Products and specifications subject to change without prior notice.

Some products may not be available in your country or region.

AUGER TORQUE, SHOCK LOCK™, NDS™ and the AUGER TORQUE LOGO are trademarks of Auger Torque Europe Ltd © 2023 Auger Torque Europe Ltd. All Rights Reserved.